

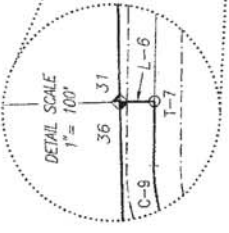
DIV. NO. 144.68
ROMA

HERRERA,
BOOK 1989-4,
PAGES 949-950.

TRACT 10AA
(SEE NOTE "A")
10.312 ACRES ±

LOT 3
SANCHEZ,
BOOK 1994-9,
PAGES 886-889.

REIDHEAD,
BOOK 2006,
PAGE 764.



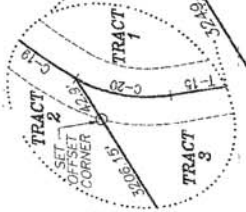
HURO
BK 1983-18
PG 419-423

CHAVEZ
BK 79
PG 888

TRACT 1
153.778 ACRES ±

TRACT 2
343.928 ACRES ±

TRACT 3
244.594 ACRES ±



TULLY,
FILE 316,
PAGE 1167.

N89°34'35"E

1340.59'

5301.53'

2697.64'

2717.33'

2603.89'

101°05'01"W

1372.64'

N87°06'39"E

1801.58'

5209.73'

N88°50'20"E

2717.33'

ORIGINAL LOT LINE

1374.62'

2749.25'

N02°34'57"E

1261.37'

N02°34'57"E

1261.37'

1200.00'

N88°05'16"W

2869.94'

S59°42'11"W

4069.94'

N00°12'01"E

1303.96'

1374.62'

2749.25'

S/2 SW/4

SW/4 SE/4

1374.62'

2749.25'

1374.62'

1374.62'

1374.62'

1374.62'

1374.62'

1374.62'

1374.62'

1374.62'

1374.62'

1374.62'

1374.62'

1374.62'

1374.62'

1374.62'

1374.62'

1374.62'

1374.62'

1374.62'

1374.62'

1374.62'

1374.62'

1374.62'

1374.62'

1374.62'

1374.62'

1374.62'

1374.62'

1374.62'

1374.62'

1374.62'

1374.62'

1374.62'

1374.62'

1374.62'

1374.62'

1374.62'

1374.62'

1374.62'

1374.62'

1374.62'

1374.62'

1374.62'

1374.62'

1374.62'

1374.62'

1374.62'

1374.62'

1374.62'

1374.62'

1374.62'

1374.62'

1374.62'

1374.62'

1374.62'

1374.62'

1374.62'

1374.62'

1374.62'

1374.62'

1374.62'

1374.62'

1374.62'

1374.62'

1374.62'

1374.62'

1374.62'

1374.62'

1374.62'

1374.62'

1374.62'

1374.62'

1374.62'

1374.62'

1374.62'

1374.62'

1374.62'

1374.62'

1374.62'

1374.62'

1374.62'

1374.62'

1374.62'

1374.62'

1374.62'

1374.62'

1374.62'

1374.62'

1374.62'

1374.62'

1374.62'

1374.62'

1374.62'

1374.62'

1374.62'

1374.62'

1374.62'

1374.62'

1374.62'

1374.62'

1374.62'

1374.62'

1374.62'

1374.62'

1374.62'

1374.62'

1374.62'

1374.62'

1374.62'

1374.62'

1374.62'

1374.62'

1374.62'

1374.62'

1374.62'

1374.62'

1374.62'

1374.62'

1374.62'

1374.62'

1374.62'

1374.62'

1374.62'

1374.62'

1374.62'

1374.62'

1374.62'

1374.62'

1374.62'

1374.62'

1374.62'

1374.62'

1374.62'

1374.62'

1374.62'

1374.62'

1374.62'

1374.62'

1374.62'

1374.62'

1374.62'

1374.62'

1374.62'

1374.62'

1374.62'

1374.62'

1374.62'

1374.62'

1374.62'

1374.62'

1374.62'

1374.62'

1374.62'

1374.62'

1374.62'

1374.62'

1374.62'

1374.62'

1374.62'

1374.62'

1374.62'

1374.62'

1374.62'

1374.62'

1374.62'

1374.62'

1374.62'

1374.62'

1374.62'

1374.62'

1374.62'

1374.62'

1374.62'

1374.62'

1374.62'

1374.62'

1374.62'

1374.62'

1374.62'

1374.62'

1374.62'

1374.62'

1374.62'

1374.62'

1374.62'

1374.62'

1374.62'

1374.62'

1374.62'

1374.62'

1374.62'

1374.62'

1374.62'

1374.62'

1374.62'

1374.62'

1374.62'

1374.62'

1374.62'

1374.62'

1374.62'

1374.62'

1374.62'

1374.62'

1374.62'

1374.62'

1374.62'

1374.62'

1374.62'

1374.62'

1374.62'

1374.62'

1374.62'

1374.62'

1374.62'

1374.62'

1374.62'

1374.62'

1374.62'

1374.62'

1374.62'

1374.62'

1374.62'

1374.62'

1374.62'

1374.62'

1374.62'

1374.62'

1374.62'

1374.62'

1374.62'

1374.62'

1374.62'

1374.62'

1374.62'

1374.62'

1374.62'

1374.62'

1374.62'

1374.62'

1374.62'

1374.62'

1374.62'

1374.62'